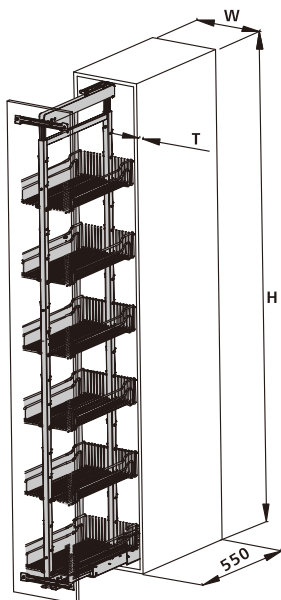


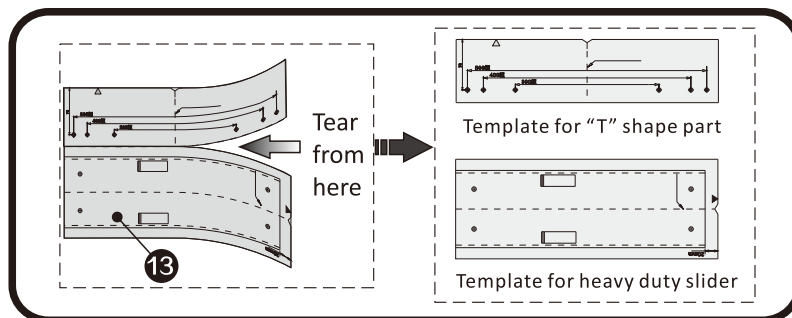
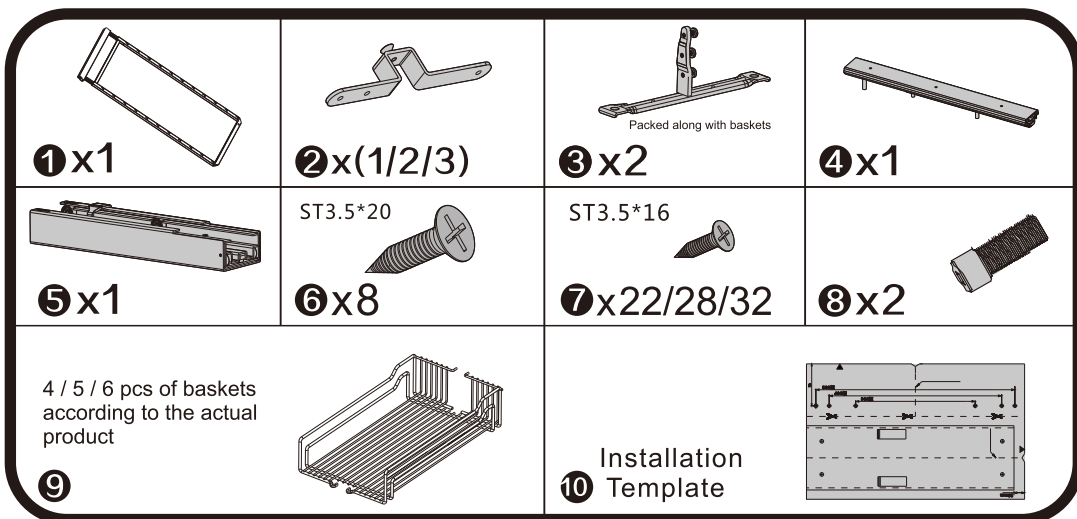
# Installation Manual for soft close tall unit



Warning: The illustration is just for reference ;

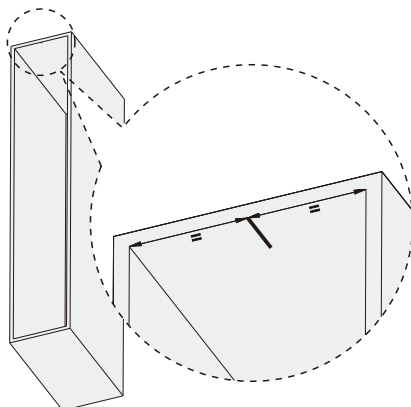
Remark:

-- Before installation please carefully read this manual  
Make sure the product is right fitting for your cabinet.

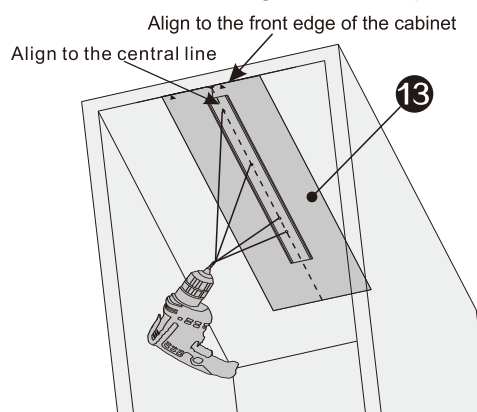


## 1 Installation for upper slider

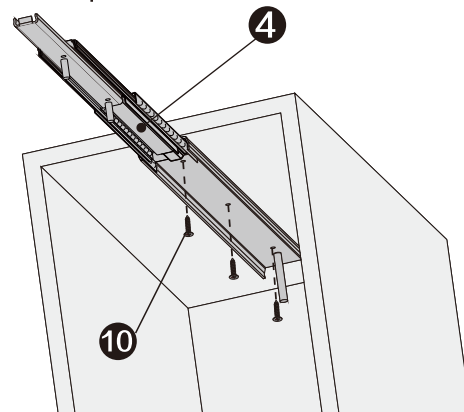
### 1.1 Draw the central line here



### 1.2 Drill 3x Ø2.5mm holes according to the template

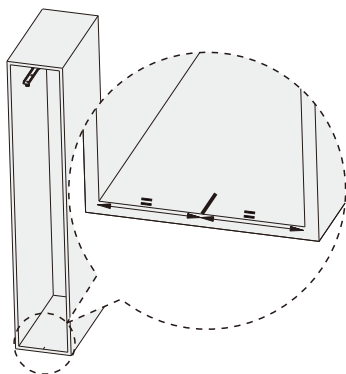


### 1.3 Fasten the upper slider with 3 pieces of screws

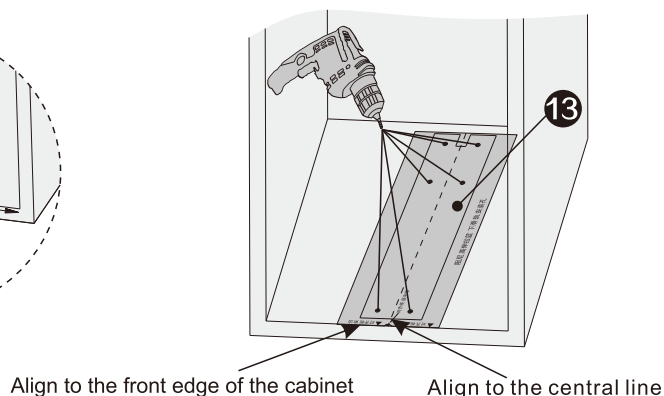


## 2 Installation of heavy duty slider

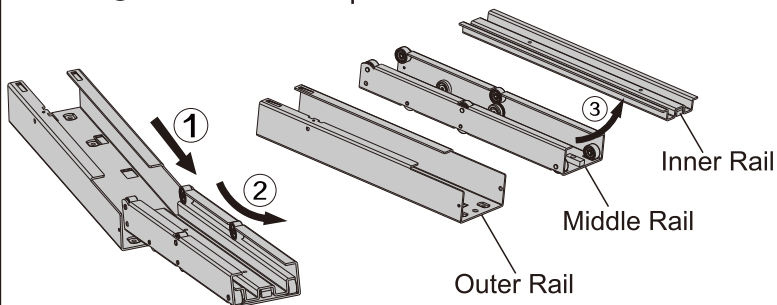
### 2.1 Draw the central line for the same



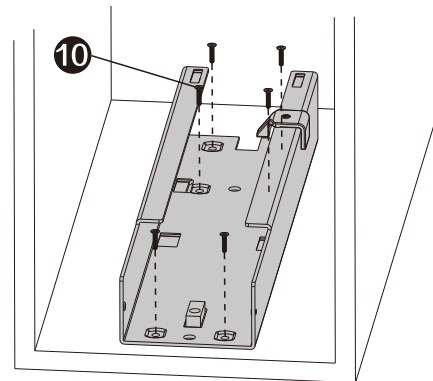
### 2.2 Drill 6x Ø2.5mm holes according to the template



- 2.3** ① Pull out the slider till the end  
 ② Separate it  
 ③ Into 3 individual part

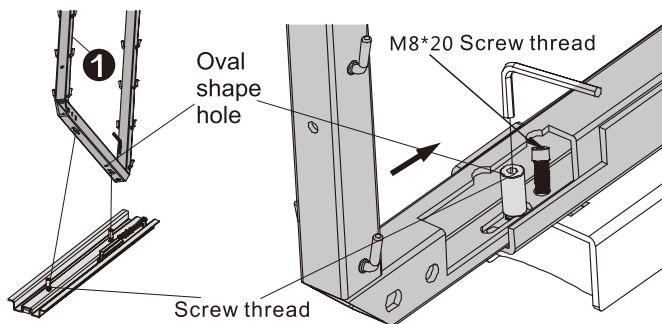


- 2.4** Fasten the outer rail with 6 pcs of screws



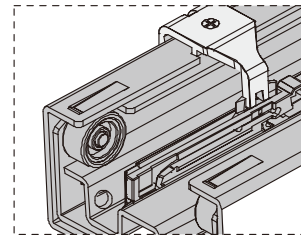
## 3 Installation and adjustment of the frame

- 3.1** Combine the frame with the inner rail

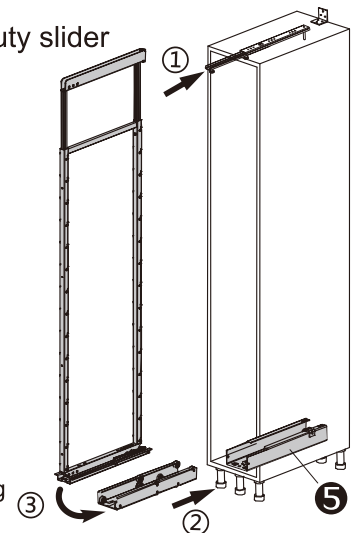


- 3.2** Assemble the heavy duty slider

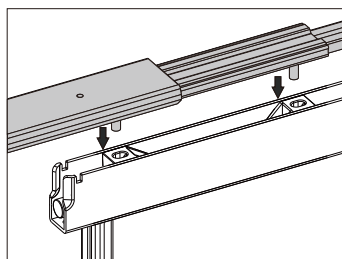
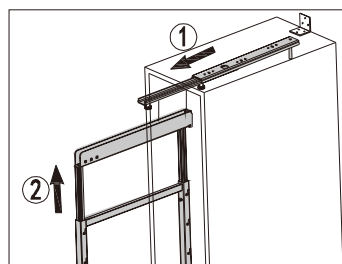
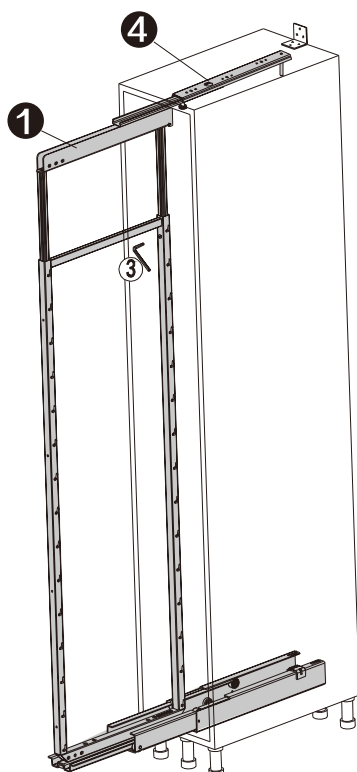
Please clean the slider before sliding;



After the installation is finished, pull and drawer The slider back and forth , make sure it is working Properly ;



- 3.3** Connect the frame with the upper slider as well

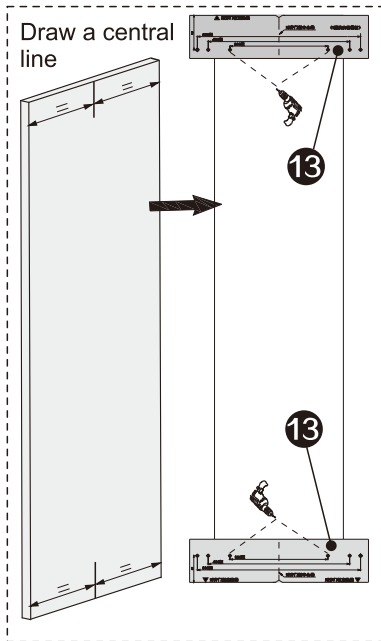


After installation , remember to test the frame is matching properly

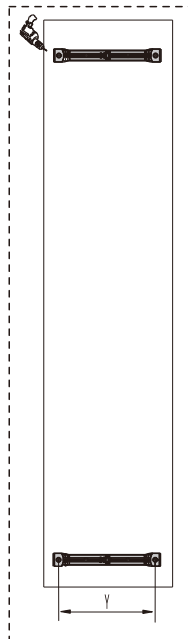
1. Please fully extend the upper slider ①
2. Adjust the height of the frame ② , and make sure they are matching Properly
3. Fasten the frame ③ and make sure it is completely fixed

## 4 Installation of door panel

**4.1** Draw and drill 2 holes according to the template by both end of The panel

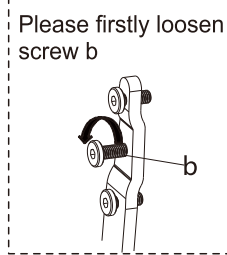


**4.2** Install the "T" shape part



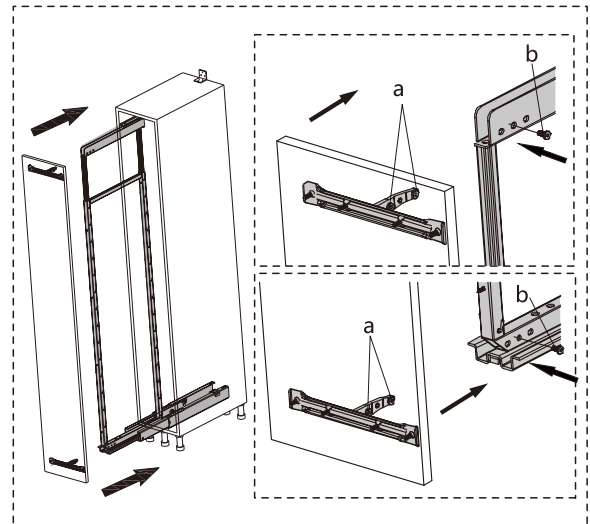
Cabinet	Y
200	125mm
300	225mm
400	325mm
500	425mm

**4.3** Loosen screw b



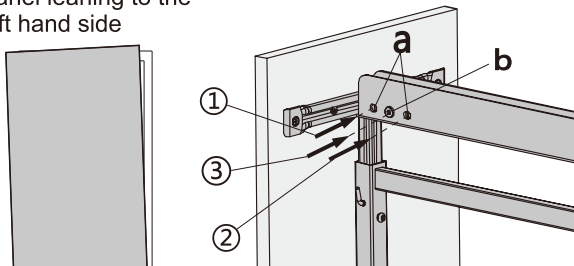
1. Install both "T" shape part as illustrated
2. Loosen the screw b of the "T" shape part
3. Connect the frame with both "T" Shape parts

**4.4** Install the upper and lower "T" shape part.

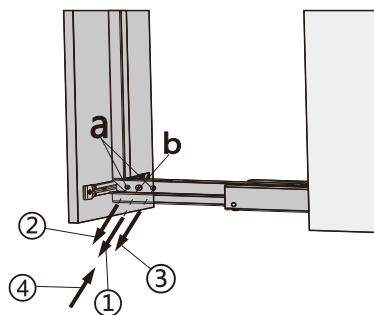


## 5 Adjustment of the door panel

Panel leaning to the left hand side

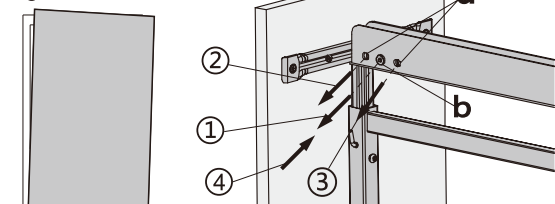


Fasten screw a by following ① ②, and fasten screw b also

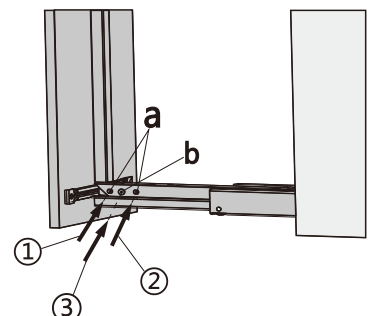


Loosen screw b by following ①, and loosen screw a by Following ②③, at last fasten screw b by following ④

Panel leaning to the right hand side

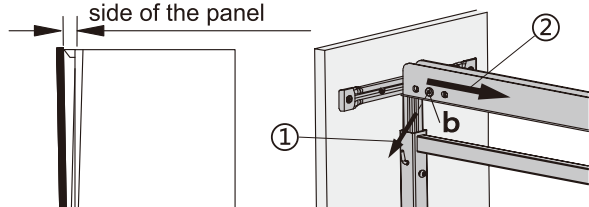


Fasten screw b by following ①, loosen screw a by following ② ③, at last fasten screw b by following ④

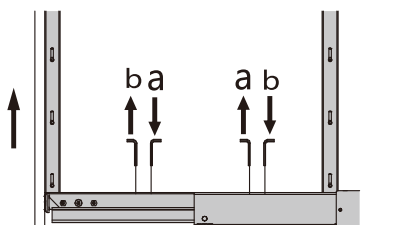


Fasten screw a by following ① ②, at last fasten screw b

There is gap at the upper side of the panel



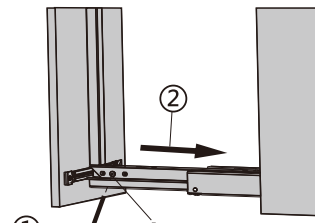
Loosen screw b by following ① , and push against the panel by following ②



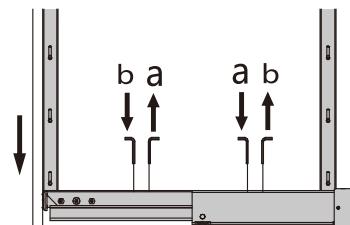
If there is gap on the upper side , please fasten screw a or loosen B to adjust it



There is gap at the lower side of the panel

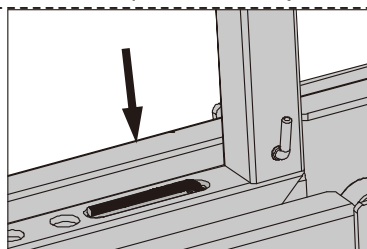
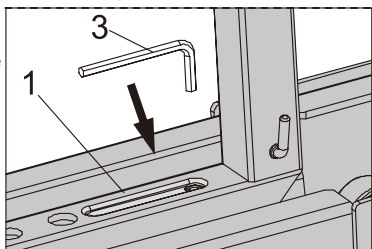


Loose screw "b" by following ① , and push the door inward



If there is gap on the lower side , please fasten screw b or loosen a to adjust it

The adjusting nut is located at the rear side of the frame



## 6 Install the "U" shape parts and baskets

Screw and fasten all the necessary screws of the "U" shape parts

Averagely place the baskets according to the actual height of the Frame

Remark:  
All "U" shape part must be properly installed to ensure the safety

